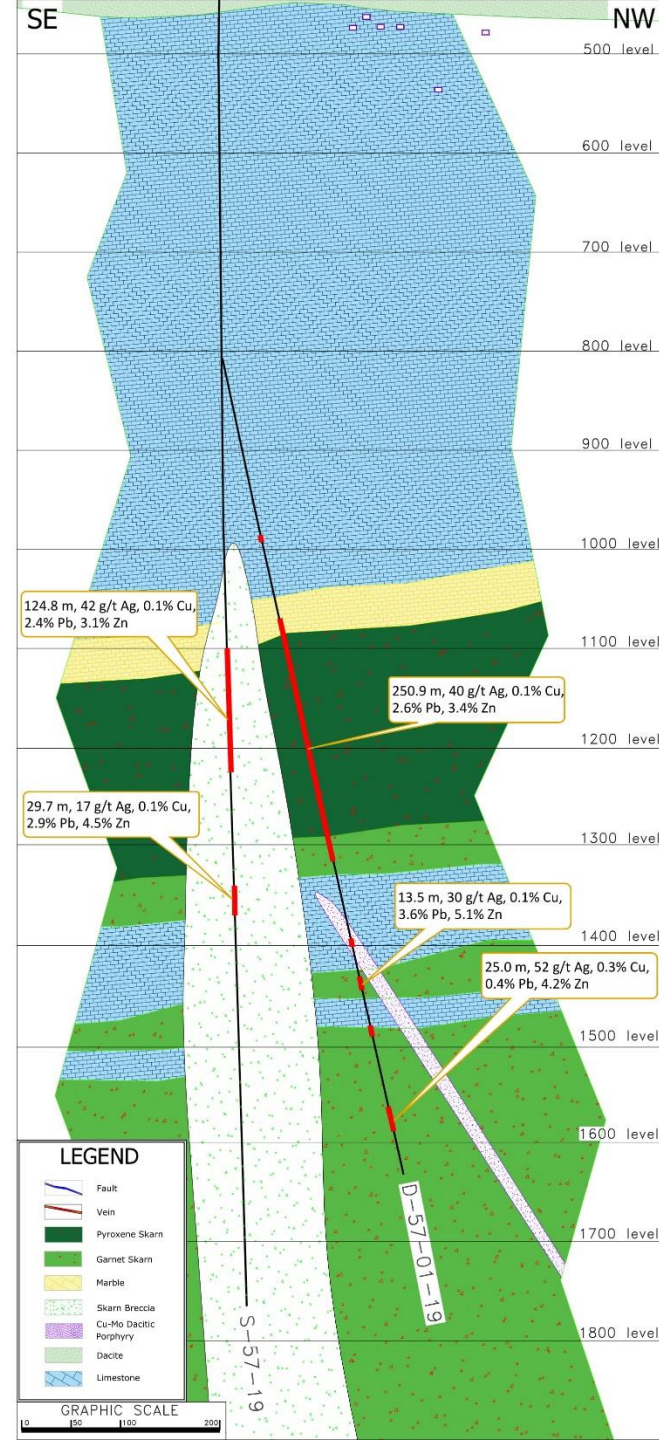


Figure 1 – Plan view of drill hole and section line locations

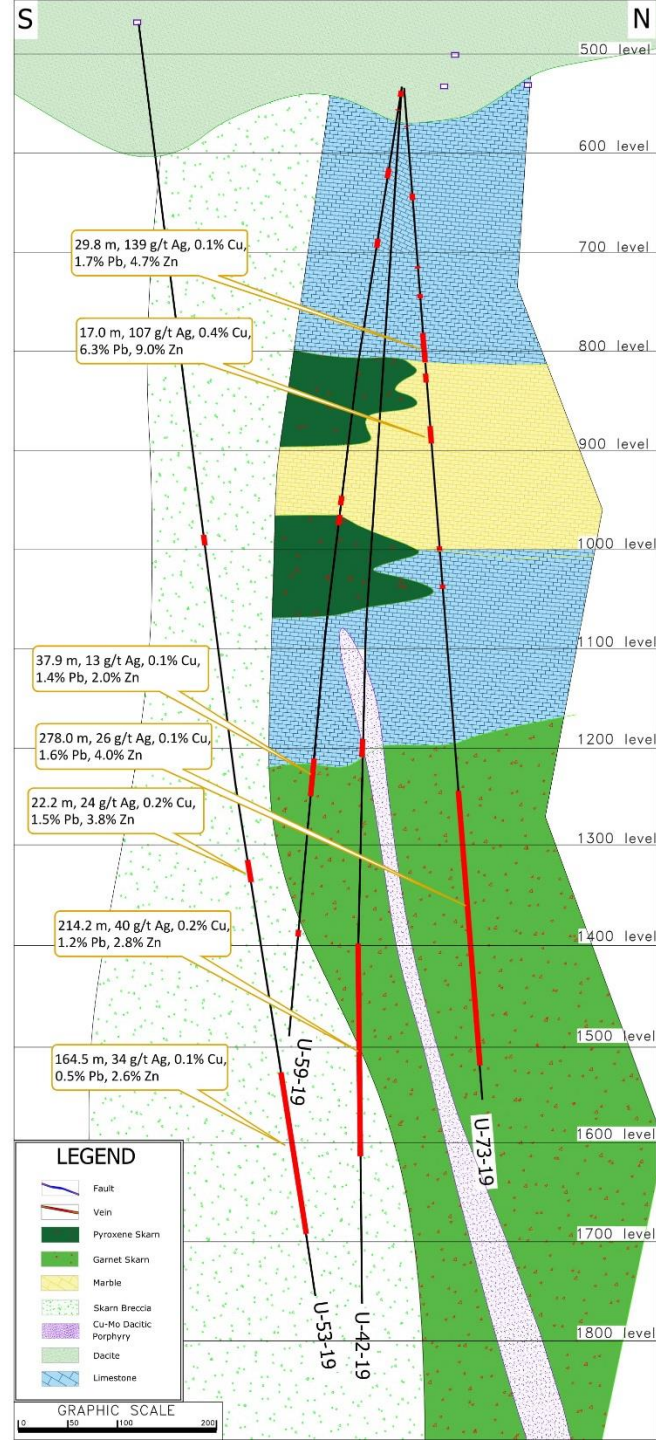
## Figure 2 – Cross Section 10

Details of intervals for drill holes not described in the October 30, 2019 news release are available in previous news releases



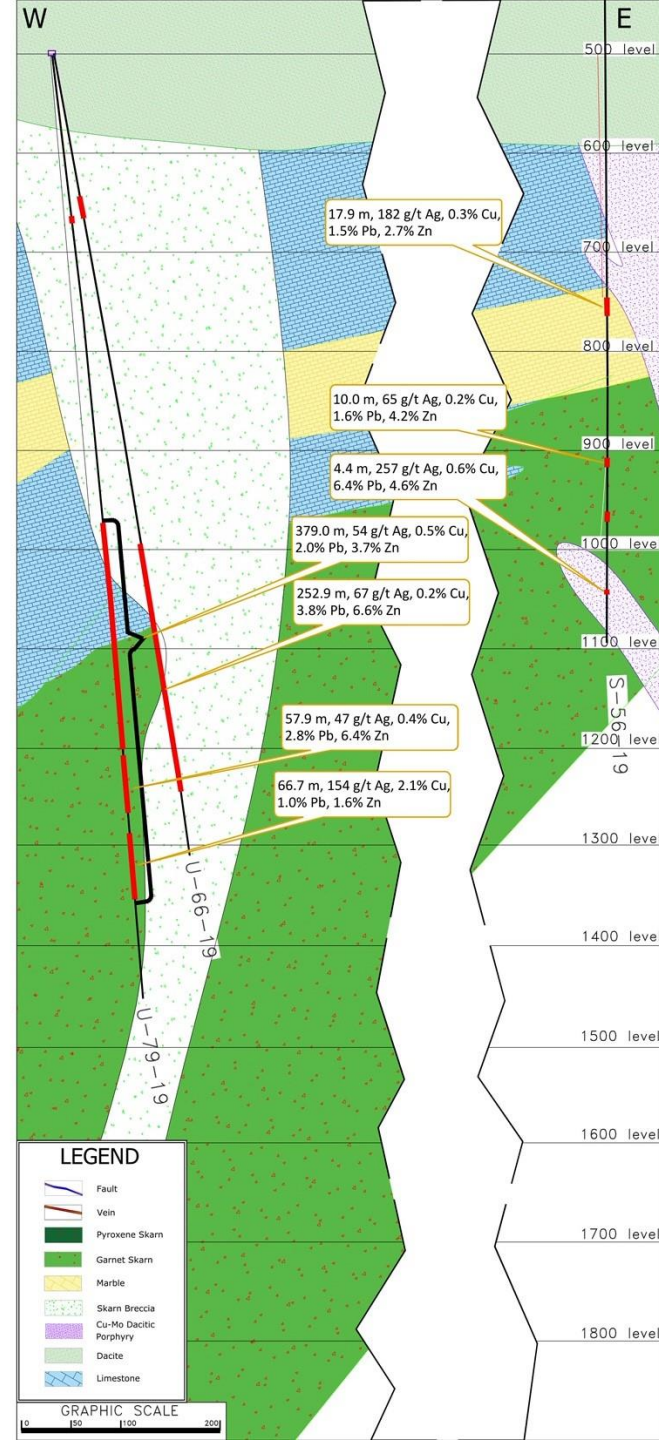
# Figure 3 – Cross Section 11

Details of intervals for drill holes not described in the October 30, 2019 news release are available in previous news releases

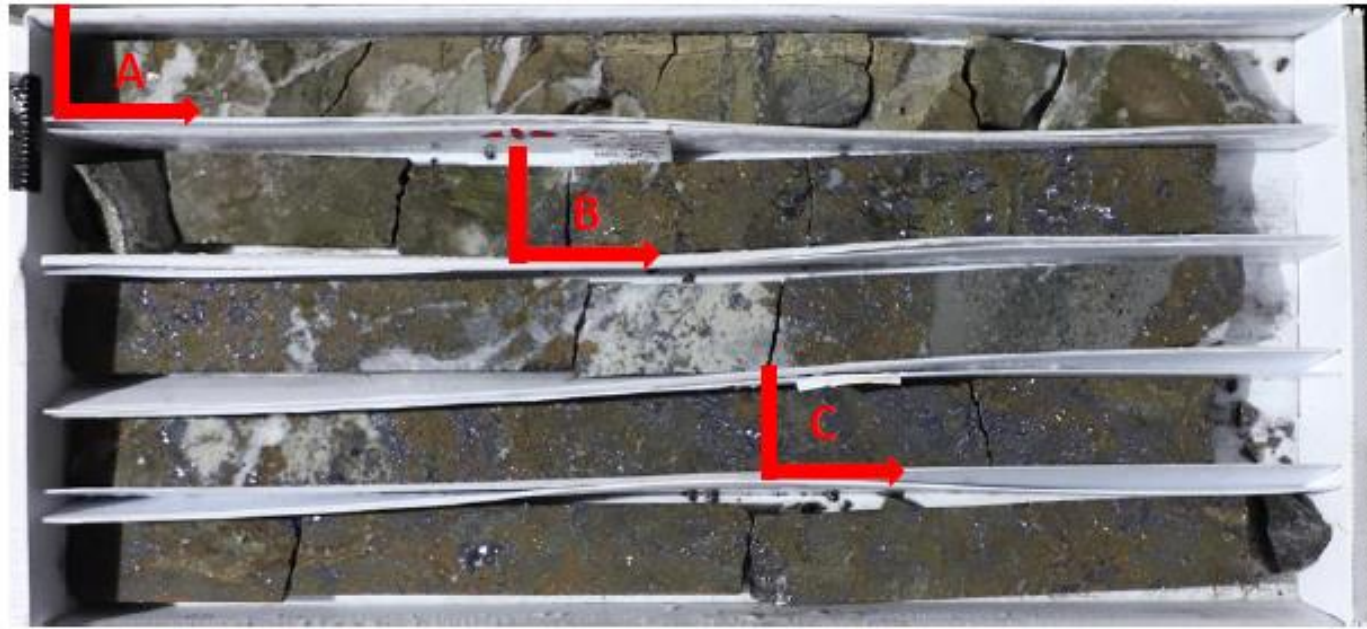


# Figure 4 – Cross Section 12

Details of intervals for drill holes not described in the October 30, 2019 news release are available in previous news releases



# CORE BOX PHOTOS



D-57-2-19 from 1185.10 m. to 1187.95 m.

Drillhole	Width (m)	Ref#	g/t Ag	g/t Au	% Cu	% Pb	% Zn
D-57-2-19	0.50	A	32	0.03	0.13	3.77	5.10
D-57-2-19	1.55	B	254	0.32	0.85	20.90	21.40
D-57-2-19	0.80	C	271	0.13	0.37	25.30	26.50

60 cm.

## CORE BOX PHOTOS



U-66-19		from	533.15 m.	to	535.25 m.		
Drillhole	Width (m)	Ref#	g/t Ag	g/t Au	% Cu	% Pb	% Zn
U-66-19	0.55	A	156	0.05	0.05	21.50	25.40
U-66-19	0.70	B	193	0.07	0.07	15.00	29.70
U-66-19	0.65	C	207	0.07	0.43	15.80	24.80

60 cm.

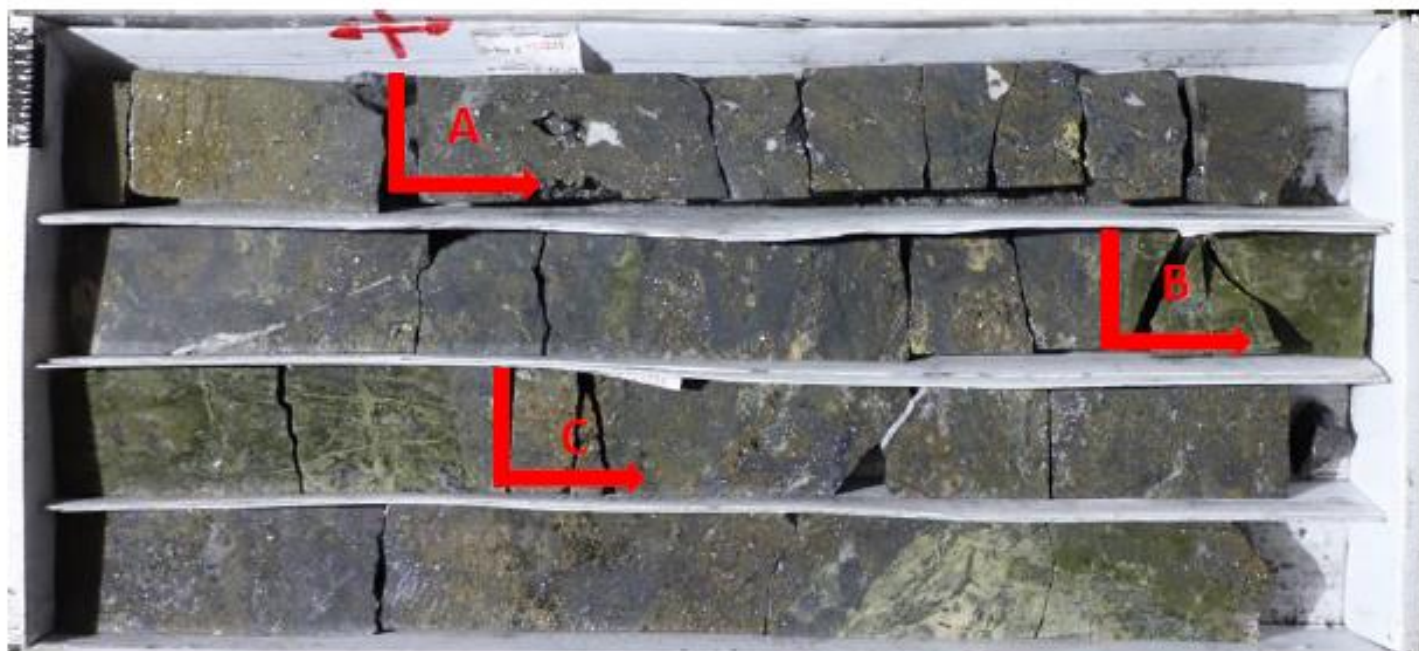
## CORE BOX PHOTOS



U-66-19		from	586.95 m.	to	589.15 m.		
Drillhole	Width (m)	Ref#	g/t Ag	g/t Au	% Cu	% Pb	% Zn
U-66-19	0.55	A	22	0.07	0.24	1.59	2.64
U-66-19	0.90	B	85	0.09	0.46	11.70	20.40
U-66-19	0.65	C	158	0.12	0.70	18.90	32.52

60 cm.

## CORE BOX PHOTOS

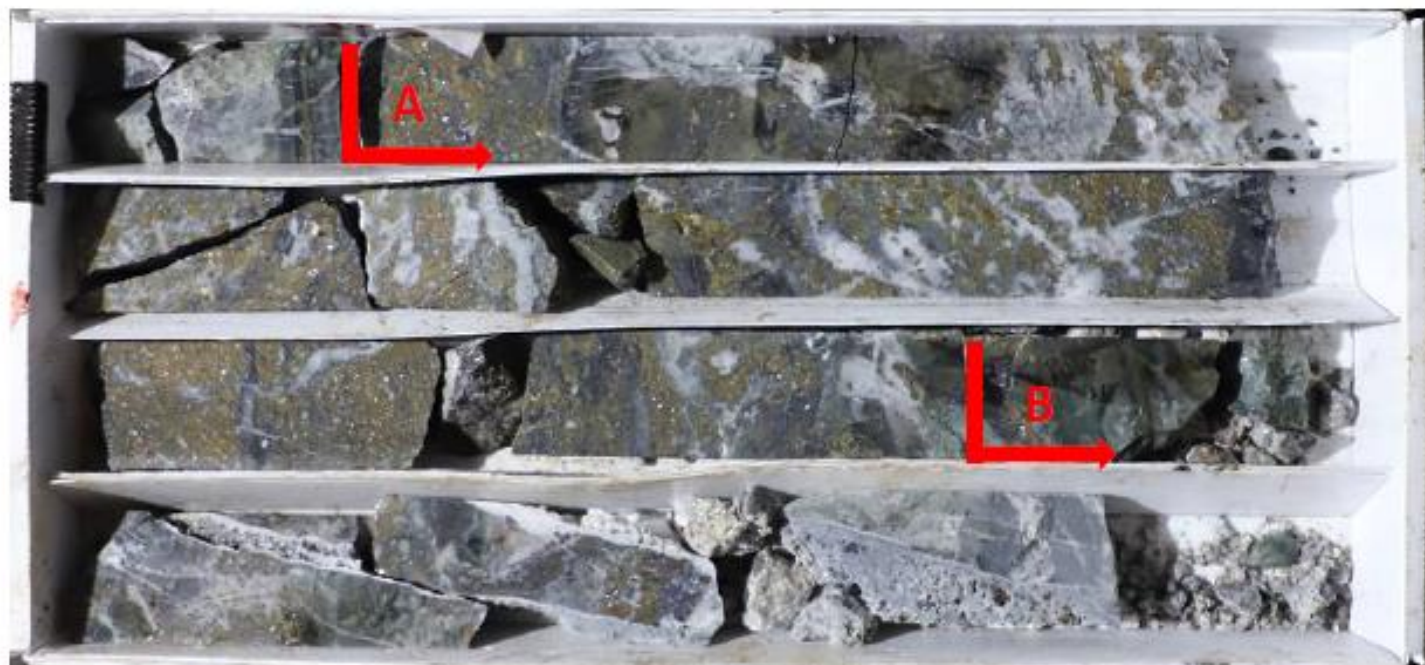


U-66-19		from	718.05 m.	to	720.30 m.		
Drillhole	Width (m)	Ref#	g/t Ag	g/t Au	% Cu	% Pb	% Zn
U-66-19	0.90	A	249	0.08	0.88	14.80	29.60
U-66-19	0.30	B	36	0.02	0.11	4.25	3.85
U-66-19	0.90	C	119	0.07	0.76	11.90	27.90

60 cm.



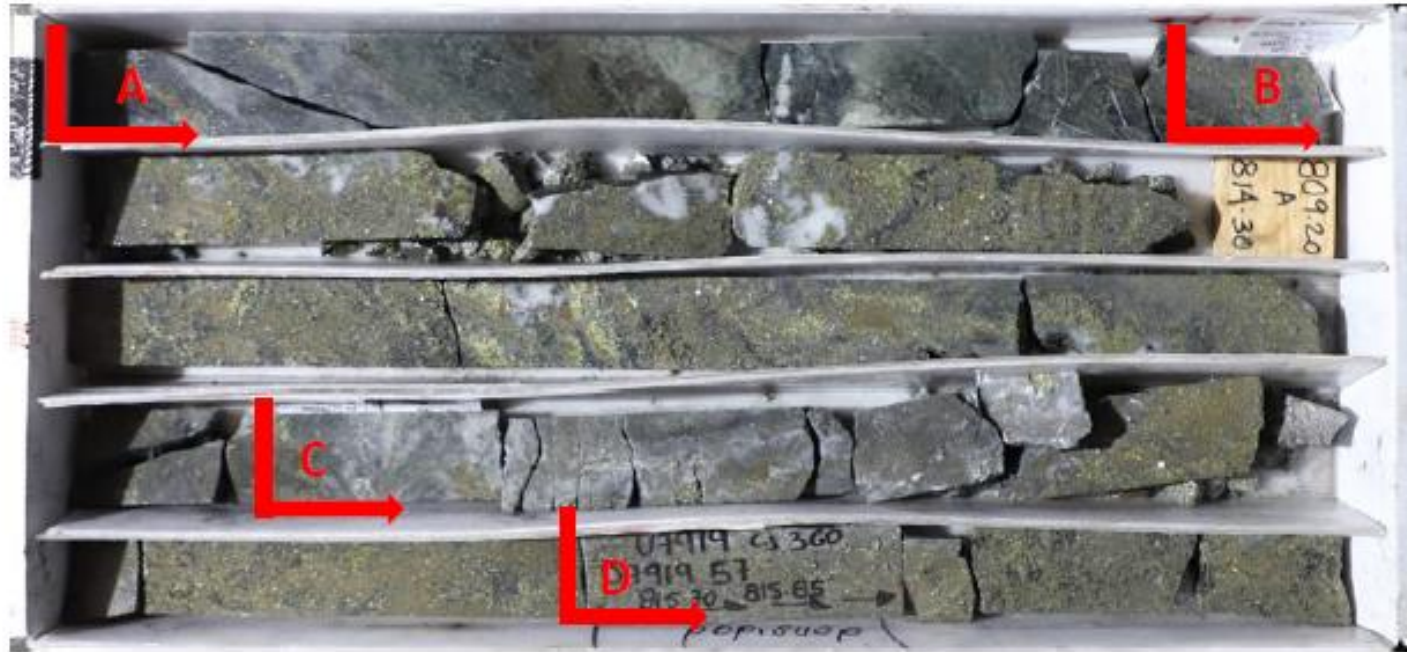
# CORE BOX PHOTOS



U-79-19		from	489.70 m.	to	491.80 m.		
Drillhole	Width (m)	Ref#	g/t Ag	g/t Au	% Cu	% Pb	% Zn
U-79-19	1.35	A	167	0.21	1.74	4.33	16.20
U-79-19	0.65	B	31	0.07	0.12	3.31	2.97

60 cm.

## CORE BOX PHOTOS



U-79-19		from	813.20 m.	to	816.10 m.		
Drillhole	Width (m)	Ref#	g/t Ag	g/t Au	% Cu	% Pb	% Zn
U-79-19	0.50	A	75	0.16	0.81	0.64	1.26
U-79-19	1.25	B	564	0.19	5.71	1.77	1.51
U-79-19	0.75	C	302	0.23	3.99	1.85	2.83
U-79-19	0.40	D	430	0.23	4.99	1.36	0.32

60 cm.