

La Colorada Mine

Drill Hole Collar Table.....Page 1

(Coordinates in the local mine grid system)

Drill Hole Assay Composite Table..... Page 3

Cross Section and Plans.....Page 5

La Colorada Mine Drill Hole Collar Table

Hole No.	UTME	UTMN	Elev (masl)	Az (°)	Incl. (°)	TD (m)
S-102-23	5,772.1	5,501.5	2,540.0	342.1	-60.4	758.1
S-105-23	5,806.2	5,769.0	2,591.4	315.4	-76.3	680.3
S-115-23	5,772.9	5,499.5	2,543.3	342.2	-65.7	761.1
S-119-23	5,806.4	5,768.7	2,591.7	309.9	-81.4	680.4
S-123-23	5,772.0	5,501.3	2,539.8	334.7	-53.0	793.3
S-125-23	5,807.5	5,770.0	2,591.4	337.8	-78.3	743.2
S-129-23	5,772.1	5,501.7	2,539.9	335.9	-46.3	664.8
S-131-23	5,806.3	5,769.2	2,591.5	12.7	-77.8	689.2
S-73-23	5,773.0	5,501.2	2,539.9	327.7	-61.2	713.1
S-84-23	5,772.9	5,501.4	2,539.9	331.0	-55.3	747.7
S-95-23	5,807.0	5,769.2	2,592.5	346.5	-80.8	761.2
S-97-23	5,772.6	5,501.7	2,539.8	328.6	-46.1	650.0
U-03-23	5,328.8	5,536.2	1,999.7	344.1	23.2	307.5
U-103-23	5,327.7	5,537.7	1,998.2	316.8	-66.9	299.7
U-106-23	5,328.0	5,537.5	1,999.0	324.4	-71.2	380.6
U-111-23	5,326.3	5,538.1	1,999.0	294.3	-21.1	65.8
U-114-23	5,331.6	5,538.2	1,999.6	39.7	-3.7	392.6
U-132-23	5,326.4	5,526.7	1,999.4	179.8	-1.8	419.6
U-156-22	5,329.7	5,536.7	1,998.9	312.1	-25.7	254.1
U-31-23	5,326.8	5,538.5	2,000.4	302.9	13.9	271.2
U-33-23	5,327.0	5,538.4	2,000.7	309.2	23.0	293.7
U-38-23	5,326.7	5,538.5	2,000.3	301.0	14.7	238.0
U-42-23	5,326.1	5,537.9	2,000.7	284.5	21.6	299.0
U-47-23	4,294.9	4,763.6	1,897.2	335.6	-58.5	218.7
U-48-23	5,326.1	5,537.9	2,000.7	336.5	21.0	14.4
U-49-23	5,327.9	5,538.2	2,000.1	328.6	16.8	308.0

Hole No.	UTME	UTMN	Elev (masl)	Az (°)	Incl. (°)	TD (m)
U-53-23	5,327.5	5,538.7	2,000.7	329.6	23.8	299.7
U-56-23	5,331.0	5,538.8	1,998.3	44.7	-46.2	368.3
U-60-23	5,330.9	5,538.4	1,998.2	44.3	-52.8	308.6
U-64-23	5,330.3	5,538.3	1,998.5	22.8	-68.9	326.7
U-69-23	5,332.3	5,537.9	1,998.6	43.3	-57.6	326.7
U-71-23	5,328.7	5,538.2	1,998.5	348.4	-69.7	302.7
U-75-23	5,328.2	5,538.3	2,001.1	339.8	26.4	293.7
U-77-23	5,331.7	5,538.3	1,998.7	45.9	-36.2	371.7
U-83-23	5,331.9	5,538.2	1,998.6	35.9	-39.9	278.4
U-86-23	5,331.4	5,537.5	1,999.0	38.0	-58.5	344.7
U-90-23	5,330.8	5,537.2	1,998.6	18.1	-63.4	299.0
U-96-23	5,330.9	5,538.5	1,998.3	18.4	-48.6	327.9
U-99-23	5,330.4	5,538.9	1,998.5	10.0	-37.7	212.4

La Colorada Mine Drill Hole Assay Composite Table

Hole No.	From (m)	To (m)	Int. (m)	Est. True Width (m)	Ag g/t	Pb %	Zn %
S-102-23	678.00	679.10	1.10	0.95	909	2.26	5.72
S-105-23	611.20	613.60	2.40	1.83	236	0.48	1.25
S-115-23	693.85	695.35	1.50	1.25	349	3.02	7.61
S-119-23	659.65	660.00	0.35	0.26	247	0.66	2.51
S-123-23	648.95	652.00	3.05	2.58	1171	1.04	0.81
S-125-23	586.90	588.05	1.15	0.75	3	0.01	0.03
S-129-23	614.15	614.95	0.80	0.71	3	0.04	0.13
S-131-23	NSV						
S-73-23	711.20	713.10	1.90	1.33	1455	3.43	1.26
S-84-23	666.50	668.20	1.70	1.33	4067	0.76	1.82
S-95-23	615.10	616.00	0.90	0.51	792	0.59	1.39
S-97-23	630.70	631.70	1.00	0.84	205	0.32	0.63
U-03-23	225.15	228.90	3.75	2.63	521	0.56	1.56
U-103-23	214.50	216.75	2.25	0.89	82	1.32	4.04
U-106-23	234.70	237.50	2.80	0.93	69	4.18	7.79
U-111-23	Lost hole						
U-114-23	329.70	331.20	1.50	0.84	370	1.08	4.20
U-132-23	NSV						
U-156-22	168.85	172.05	3.20	3.14	379	1.06	1.10
U-31-23	214.35	215.75	1.40	1.13	1181	1.02	3.25
U-33-23	246.15	246.90	0.75	0.51	3	0.03	0.08
U-38-23	219.15	219.90	0.75	0.58	160	1.70	14.91
U-42-23	289.70	290.80	1.10	0.76	44	0.01	0.04
U-47-23	188.45	190.30	1.85	0.99	385	5.90	15.09
U-48-23	NSV						
U-49-23	207.40	208.65	1.25	0.96	976	1.15	2.70
U-53-23	228.05	231.05	3.00	2.09	675	1.93	5.77
U-56-23	262.80	264.85	2.05	1.74	320	5.89	15.57
U-60-23	274.50	276.80	2.30	1.53	243	3.85	8.34
U-64-23	222.25	224.30	2.05	1.29	22	1.15	0.56
U-69-23	280.25	282.20	1.95	1.11	142	1.55	3.25
U-71-23	228.55	229.40	0.85	0.30	130	2.89	6.35
U-75-23	242.00	243.40	1.40	1.05	2804	1.59	1.33
U-77-23	266.95	268.10	1.15	0.98	393	6.15	7.50
U-83-23	230.25	232.50	2.25	1.89	226	0.44	2.92

Hole No.	From (m)	To (m)	Int. (m)	Est. True Width (m)	Ag g/t	Pb %	Zn %
U-86-23	261.35	263.35	2.00	1.12	137	2.10	4.84
U-90-23	216.90	217.30	0.40	0.28	166	4.69	12.48
U-96-23	195.60	196.05	0.45	0.37	133	1.69	1.59
U-99-23	176.20	176.80	0.60	0.54	299	1.29	3.11

La Colorada Mine Cross Section and Plans

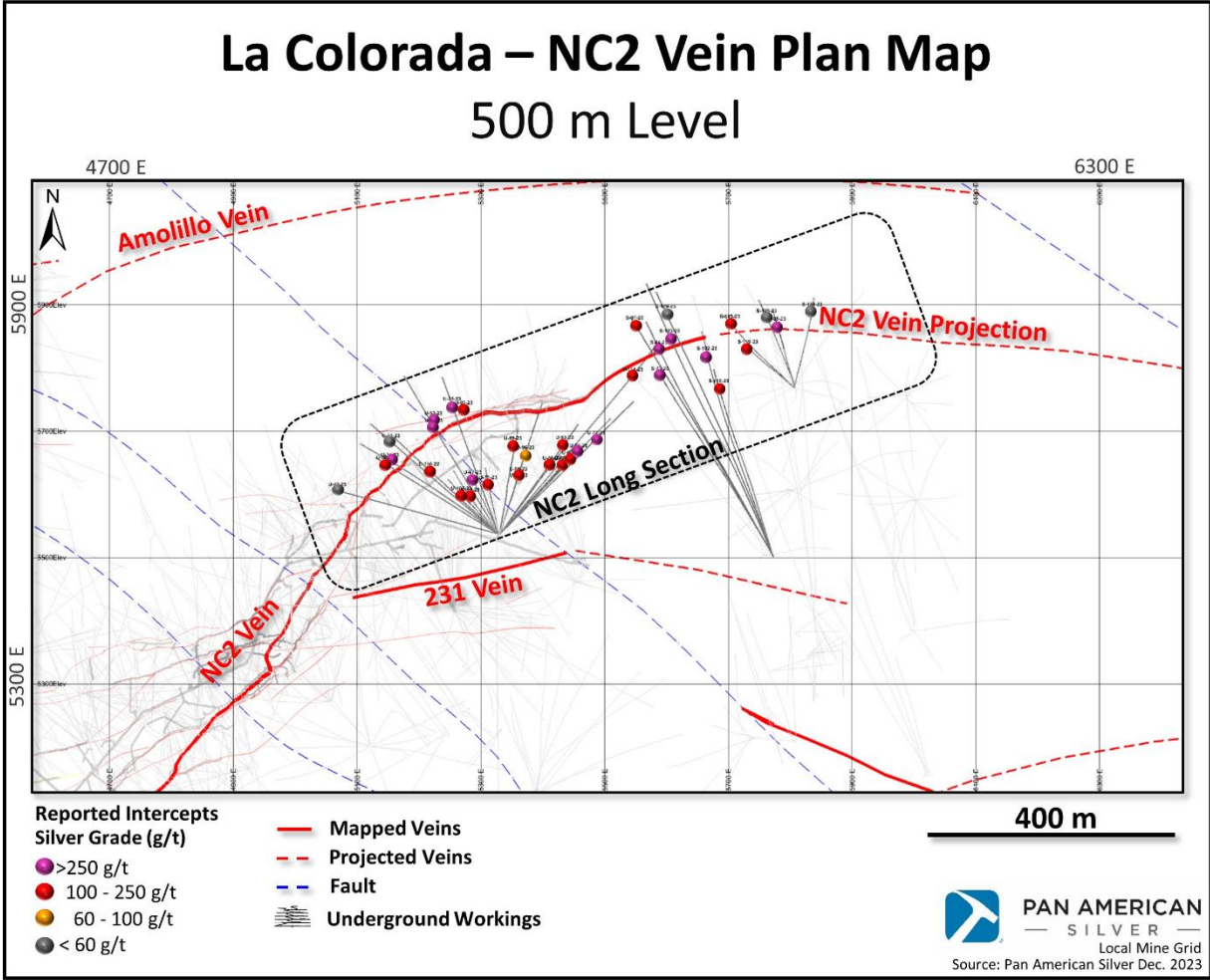


Figure 1. La Colorada - NC2 Vein Plan 500mL

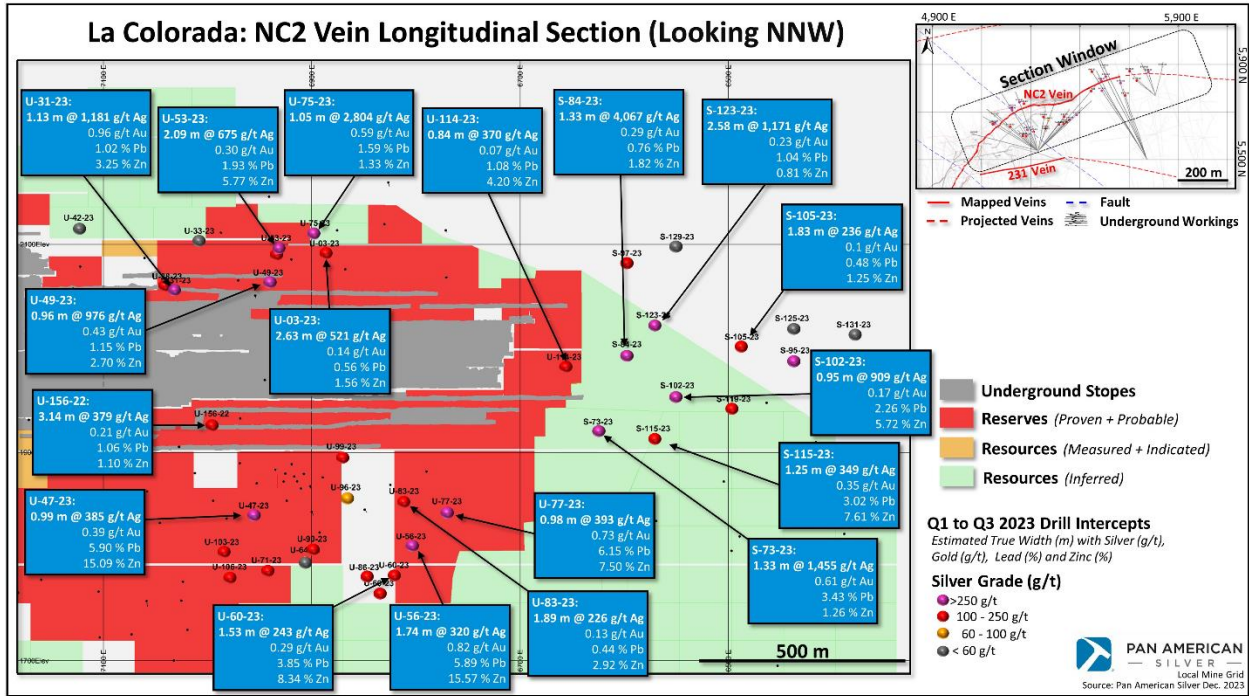


Figure 2. La Colorada - NC2 Long Section